



# Hastings Park-PNE Master Plan

Neighbourhood & Public Information Sessions

February 2020



# Agenda

- 1) Introduction
- 2) Hastings Park-PNE Master Plan Background
- 3) Completed Master Plan Projects
- 4) Playland Redevelopment Update
- 5) Heart of the Park Update
  - Daylighting Hastings Creek
  - Amphitheatre Renewal
- 6) Future Projects
- 7) Questions



# Hastings Park-PNE Master Plan Background



# HP-PNE Master Plan | Vision

## Vision

Hastings Park as a place....

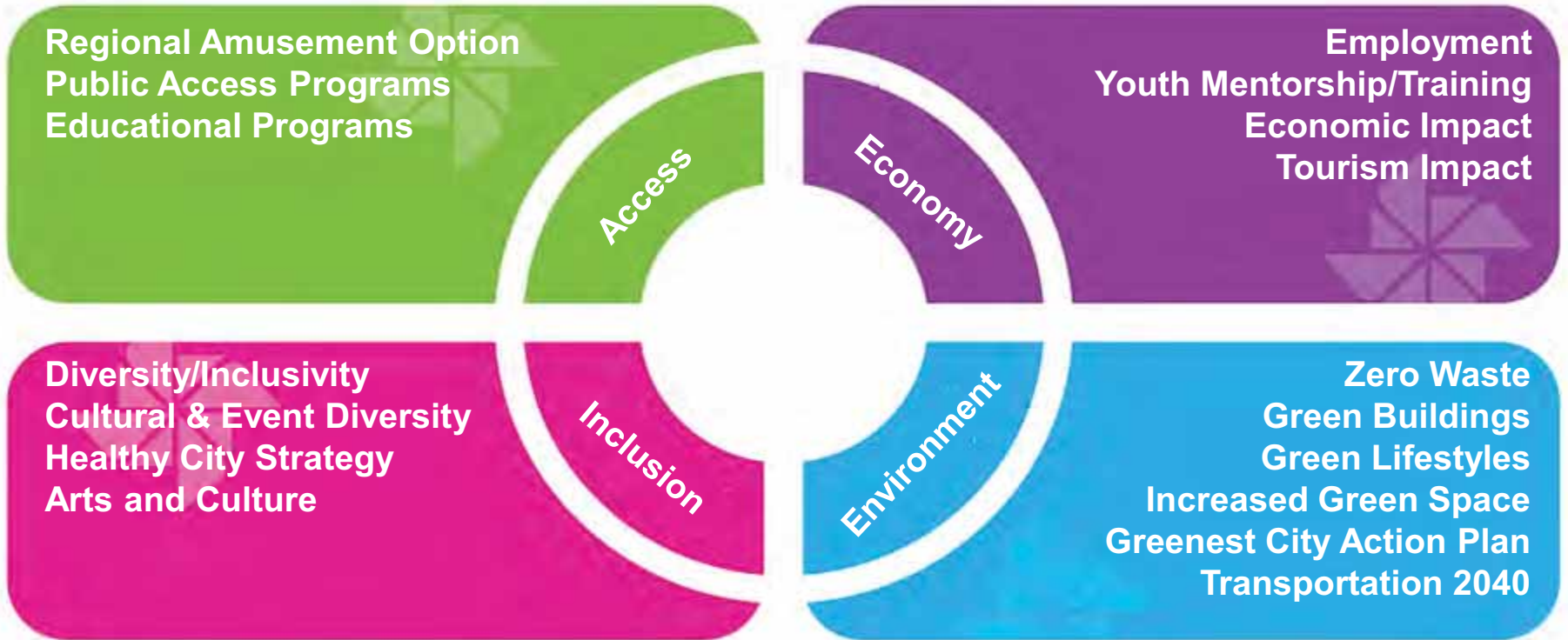
- of **Renewal and Transformation**
- of **Celebration**
- of **Connections**
- for **Local Residents and Visitors**

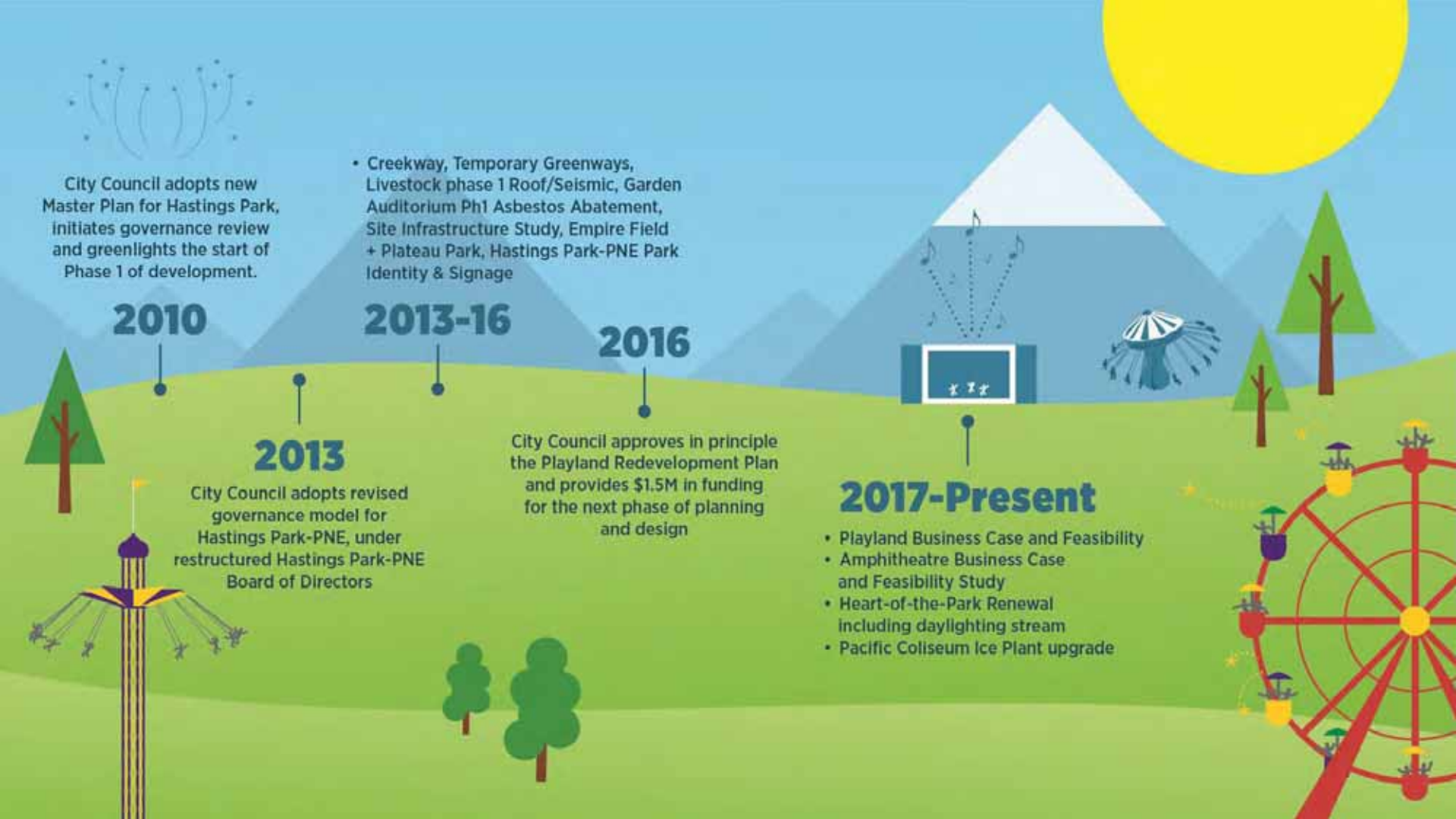
## Development Principles

1. **Create Clear Pedestrian and Vehicle Organization**
2. **Relocate and Expand Playland**
3. **Connect to Burrard Inlet**
4. **Create a Celebration “Heart of the Park”**
5. **Connect to the Community**
6. **Expand Park Space and Habitat**
7. **Build in Flexibility**
8. **Create a Hastings Park Identity**



# Master Plan Alignment





City Council adopts new Master Plan for Hastings Park, initiates governance review and greenlights the start of Phase 1 of development.

**2010**

• Creekway, Temporary Greenways, Livestock phase 1 Roof/Seismic, Garden Auditorium Ph1 Asbestos Abatement, Site Infrastructure Study, Empire Field + Plateau Park, Hastings Park-PNE Park Identity & Signage

**2013-16**

**2013**

City Council adopts revised governance model for Hastings Park-PNE, under restructured Hastings Park-PNE Board of Directors

**2016**

City Council approves in principle the Playland Redevelopment Plan and provides \$1.5M in funding for the next phase of planning and design

**2017-Present**

- Playland Business Case and Feasibility
- Amphitheatre Business Case and Feasibility Study
- Heart-of-the-Park Renewal including daylighting stream
- Pacific Coliseum Ice Plant upgrade

# Completed Master Plan Projects



# HP-PNE Master Plan | Completed Projects

## ▶ Park and Open Spaces

- Creekway Park
- Empire Fields
- Slidey Slides Park (Plateau Sports Park)
- Temporary Greenways
- Park Identify & Signage





## ▶ Buildings and Facilities

- Livestock Building Roof/Seismic Upgrade
- Garden Auditorium Asbestos Abatement
- Playland Redevelopment Plan
- Site Infrastructure Study
- Coliseum Ice Plant Upgrade
- Site-Wide Technical Studies





# HP-PNE Master Plan | Completed Projects

-  = Environment & Park Space
-  = Connections
-  = Economic Vitality
-  = Facilities & Infrastructure





# Playland Redevelopment Update

# Playland Redevelopment | Opportunity

- ▶ Economic engine with strong business case
- ▶ Self funding over time
- ▶ Transforming family gathering spaces
- ▶ Increased employment
- ▶ Meets social objectives



# Playland Redevelopment | Community Benefits

- ▶ Provides **world class attraction** in world class city
- ▶ **Improved tourism draw** with transition from amusement park to theme park
- ▶ **Provide affordable access** to regional theme park for visitors of all means
- ▶ **Increase youth employment**, training and development opportunities
- ▶ Supports City **environmental and social initiatives** through greening, social connections and outdoor recreation
- ▶ **Balances needs** of the community, PNE and City



# Playland Redevelopment | 2016 Plan

## Phase A (Years 1-5)

Renew existing Playland

- Rides & Attractions
- Shows
- Food & Beverages
- Games & Retail
- Restrooms
- Guest Services



# Playland Redevelopment | 2016 Plan

## Phase B (Years 4-10)

Expansion to achieve full 22 acres mandated in the HP-PNE Master Plan

-  Rides & Attractions
-  Shows
-  Food & Beverages
-  Games & Retail
-  Restrooms
-  Guest Services



# Playland Redevelopment | 2019 Business Case

- ▶ Studies show that the regional market supports an expanded Playland
- ▶ Redevelopment and expansion of Playland will grow attendance & revenues and achieve site-wide Master Plan objectives
- ▶ Phased investment will enable responsible growth and minimize impact
- ▶ Redevelopment will increase employment and access to critical first jobs for community youth
- ▶ Will provide a world-class entertainment option that is accessible to community members of all means



# Playland Redevelopment | Preliminary Phasing Strategy

Phase 1 – Existing Footprint



Future Phases – Existing Footprint & Remainder of Existing Footprint





# Playland Redevelopment | Outcomes

## Theme Park Outcomes

- ▶ Improve attendance and revenue
- ▶ Revitalize attractions and programming
- ▶ Increased greening and sustainability
- ▶ Accessibility and affordability

## Infrastructure Outcomes

- ▶ Renew utility infrastructure
- ▶ Increase sustainability and permeable landscapes



# Heart of the Park Update

(Amphitheatre Renewal & Hastings Creek Daylighting)



# Heart of the Park Overview



= HEART OF THE PARK



# Heart of the Park Overview

## Visions for the Heart of the Park





# Amphitheatre Renewal

# Amphitheatre | Opportunity

- ▶ Catalyze growth in the music and event industry
- ▶ Resolve space shortage within the City
- ▶ Facilitate community building
- ▶ Enhance financial sustainability of the PNE



# Amphitheatre | Preliminary Concept



# Amphitheatre | Design Priorities

- ▶ Improved sound/acoustic design to minimize impact to the neighbourhood
- ▶ Covered seating to improve guest experience
- ▶ Permanent back-of-house to reduce set-up costs for community and cultural groups
- ▶ Improved guest amenities including accessibility, utility infrastructure, washrooms, concessions, Wi-Fi
- ▶ Flexible floor plans and scalable ticketing to offer flexibility to event producers





# Amphitheatre | Opportunities & Benefits

Opportunity	Benefits
<ul style="list-style-type: none"><li>• Increase public participation and <b>engagement in the arts</b></li><li>• Promote a more <b>sustainable music industry</b></li><li>• Provide <b>compelling destination</b> experiences</li></ul>	<ul style="list-style-type: none"><li>• <b>Extend operating season</b></li><li>• Permanent infrastructure <b>reduces set up costs, barriers to use and mitigates sound</b></li><li>• <b>Improve diversity</b> of users</li></ul>
<ul style="list-style-type: none"><li>• <b>Remove barriers</b> for cultural / community groups</li></ul>	<ul style="list-style-type: none"><li>• Increase in <b>community / cultural events</b></li></ul>
<ul style="list-style-type: none"><li>• <b>Grow local music</b> industry</li></ul>	<ul style="list-style-type: none"><li>• Opportunity to <b>scale performance</b> size to event needs</li><li>• Provide <b>space for cultural and performance arts</b></li><li>• <b>Increase employment</b> at Hastings Park</li></ul>





# Hastings Creek Daylighting

# Hastings Creek Daylighting | Opportunity

- ▶ \$1.6M in funding in 2019-2022 capital plan for Daylighted Stream
- ▶ Council-approved Integrated Blue-Green Systems Planning in November 2019
  - Identified Hastings Watershed and related Hastings Creek Stream Restoration as a priority initiatives for the current capital plan
  - Presents opportunity to advance Master Plan development with broader City initiatives



# Hastings Creek Daylighting | Benefits

The daylighted stream will....

- ▶ Be ecologically rich and diverse
- ▶ Connect us with nature
- ▶ Capture our imagination
- ▶ Teach us
- ▶ Engage us
- ▶ Provide experiences



# Hastings Creek Daylighting | Conceptual Design



# Future Projects and Next Steps



# HP-PNE Master Plan | Future Projects

## Environment & Park Space

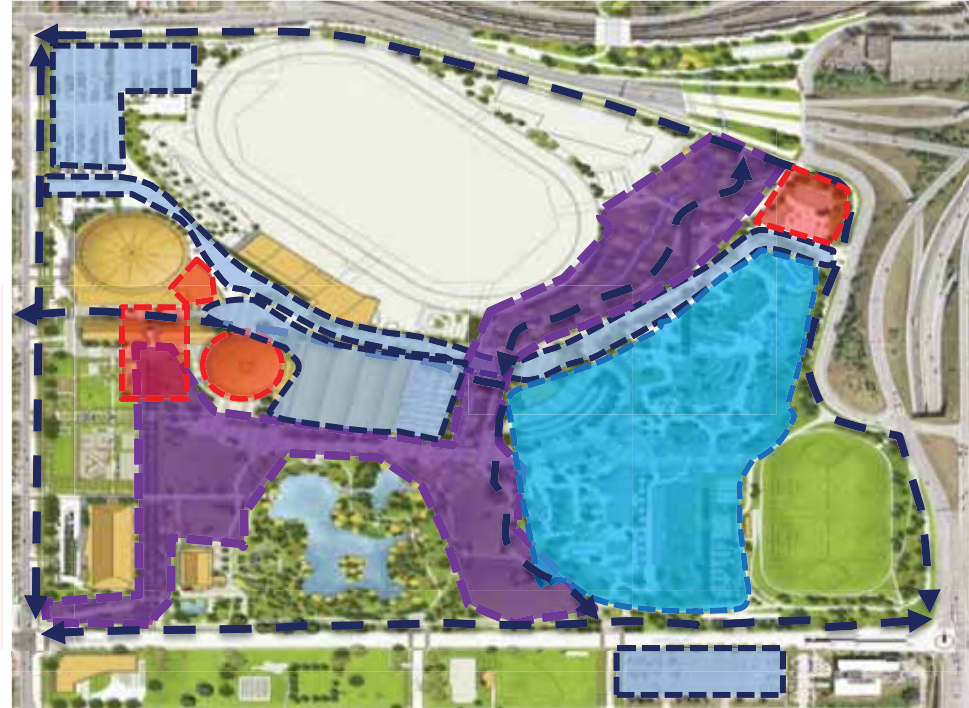
- Daylighted Stream
- Gate 1 entry
- The Parade
- Festival Meadow
- The Green
- The Allee
- The Garden's Garden
- Permanent Greenways
- Parking
- Transit/Access Improvements
- Festival Plaza
- Miller Plaza
- Livestock Building Adaptive Reuse

## Connections

## Economic Vitality

## Facilities & Infrastructure

- Utility Infrastructure Implementation
- New Administration Building
- Hastings Park Back-of-House
- Agrodome Upgrade
- New Underground Exhibition Centre



# HP-PNE Master Plan | Next Steps

## ▶ Q2 2020

- Present Amphitheatre Renewal Business Case to Council
- Present Playland Redevelopment Business Case to Council

## ▶ Q3-Q4 2020

- Initiate scoping and planning for Daylighted Stream in conjunction with City of Vancouver







Questions