



Rollerland is ideally suited for film shoots and set builds requiring longer terms.

FILMING RENTAL RATES

Monthly	\$30,000
Weekly	\$10,000
Daily	\$5,000

Minimum of 1 PNE Public Safety/Liaison must be engaged during filming and will be charged an hourly rate for Prep/Shoot/Wrap hours.

The costs of additional services provided by PNE including parking, trades, etc. will be charged in addition to the rental fee.

10% administration fee additional and applied to all charges.

SPECIFICATIONS

Clear Floor Area	19,800 sq. ft. (1,839.46 sq m)
Floor Surface	Painted concrete
South Loading Entrance	12'9" w x 10' h
Load Factor	1,000 p.s.f (4880.62 kg/sq m)
Floor to Lights	13'
Floor to Peak	22'
Floor to Slope	20'
Columns	2 rows of 4 each, 16" square

SERVICES AVAILABLE

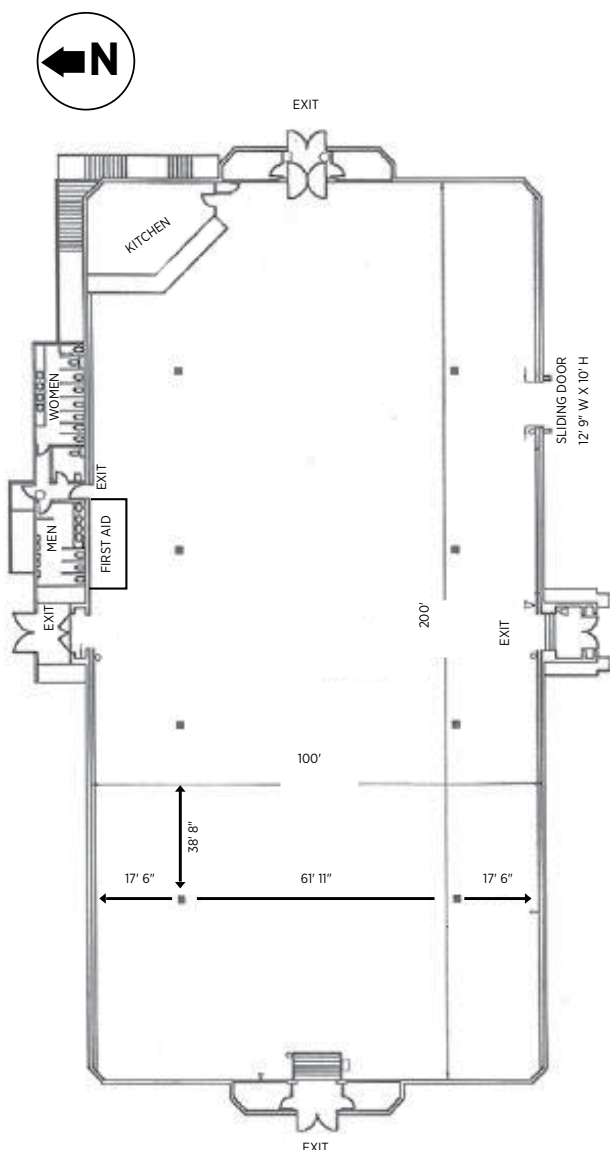
Electricity	120/208V 3 phase 4 wire Duplex plugs available
Water	Outlets available
Drain	Outlets available
Internet Services	Available as needed
Tie-In Power Available	\$1 per AMP per day
— 200 amp, 100 amp	

GUIDELINES

- No drilling into floors, walls, ceiling. Painting permitted on approvals from PNE Film Manager. PNE Painters must be engaged for any repaints.

Pacific National Exhibition's objective of providing a safe, healthy, secure environment for all staff, clients and visitors to the site is top priority. Compliance with the Worker's Compensation Act, WHMIS, ACTSAFE and related legislation is the minimum standard acceptable.

Keep your crew safe with free and subsidized health and safety resources (ActSafe) www.actsafe.ca



ROLLERLAND

