



## PNE SAYS 'GOODBYE' TO HISTORIC OUTDOOR AMPHITHEATRE

### *FINAL SEVEN CONCERTS BEFORE WORK BEGINS ON A NEW WORLD-CLASS AMPHITHEATRE*

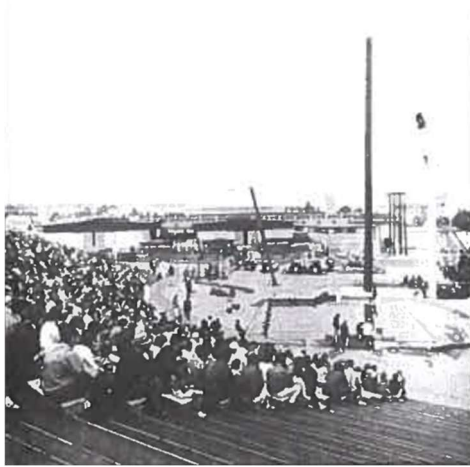
For Immediate Release  
August 29, 2023

Vancouver, BC: For almost 60 years the PNE's Amphitheatre, with its spectacular views of the North Shore mountains and Burrard Inlet, has hosted musical and cultural events for visitors across Vancouver, BC and beyond. Said to have one of the most beautiful views of any venue on the West Coast of North America, the Amphitheatre has hosted artists representing virtually every genre of music imaginable since it opened in 1964.

When the 2023 PNE Fair closes on Labour Day, Monday, September 4<sup>th</sup> so too will the PNE Amphitheatre. The last show, Blue Rodeo: 30 Years in July, will close out the Amphitheatre's 59-year run.

#### **COUNTDOWN OF SUMMER NIGHT CONCERTS REMAINING PRIOR TO AMPHITHEATRE CLOSURE:**

Tuesday, August 29 – Pink Martini featuring China Forbes  
Wednesday, August 30 - Doug and the Slugs with the VSO  
Thursday, August 31 – Pat Benatar and Neil Giraldo  
Friday, September 1 – Jason Derulo  
Saturday, September 2 – Stars of Drag (Ft. Crystal Methyd, Alyssa Edwards, Raja and more!)  
Sunday, September 3 – Walk Off The Earth  
Monday, September 4 – Blue Rodeo: 30 Years in July



- *Logging Show in the Amphitheatre, 1966*

The existing Amphitheatre will be demolished in the coming months, making way for a spectacular new world-class outdoor venue. The new Amphitheatre, which has been in the planning stages for several years, is anticipated to be one of the most impressive venues of its kind in North America when completed in 2026.

Designed to showcase British Columbia building products and engineering while adhering to the highest standards of environmental sustainability, the venue will be used to host a wide variety of music and culture events – ranging from our incredibly popular Summer Night Concerts at the PNE Fair, to arts and culture performances by symphony's, cultural innovators, community organizations and others.

Designed by renowned Vancouver-based architecture company Revery Architecture, construction on the amphitheatre is anticipated to begin in early 2024 with completion in early 2026.



- *Artist Rendering, new PNE Amphitheatre*

For more information about the PNE Fair visit: [www.PNE.ca](http://www.PNE.ca)

To purchase tickets to a remaining Summer Night Concert show visit: [www.TicketLeader.ca](http://www.TicketLeader.ca)

**About the PNE:**

Owned by the City of Vancouver, the PNE is a healthy and vibrant non-profit organization dedicated to delivering over 3 million visitors a year with memorable experiences through access to first-class cultural, music, sporting and family entertainment events, as well as access to public space for passive recreation. Founded in 1910, the PNE's home is Hastings Park, a multi-facility venue in Vancouver where the organization manages four activity streams: the annual PNE Fair, Playland Amusement Park, Park Care and Facility Maintenance and an expansive portfolio of year-round events. All revenues generated are invested back into park space, community programs and non-revenue generating educational and entertainment experiences.

-30-

**Media Contact:**

Laura Ballance  
604.771.5176 (mobile)  
[Laura@LBMG.ca](mailto:Laura@LBMG.ca)