



# PNE MINUTES

**COMMUNITY ADVISORY GROUP**  
**TUESDAY, 25 June 2024**  
**5:30PM-7:00PM**  
**PNE HASTINGS ROOM**

---

**Present: PNE Staff**

Karen Massicotte, VP, Sales & Marketing  
Anna Kalfa, Manager, Communications & Community Relations  
Sam Ellis, Administrative Assistant

**CAG in-person**

Patricia Barnes  
Courtney Komansky  
Dino Singh  
Ruby Wong  
Debbie Schachter

**Regrets:** Mayura Colling  
Shelley Dubé

**Did not attend:** Jason Mcgarry

**AGENDA TOPICS**

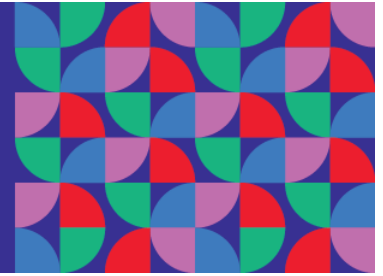
**1. Sanctuary – 25<sup>th</sup> Anniversary Update**

- Taking place on Sunday August 18<sup>th</sup>, with 200 members of the Hastings Park Conservancy. Train rides hosted by members of the Conservancy through the Sanctuary, tree planting ceremony and events on Freedom Mobile Stage in Festival Park.

**2. 2024 PNE Fair – Update**

- Changes to the footprint for 2024. SNC in Pacific Coliseum, Superdogs in the Agrodome, no Revel District. Rollerland being used for entertainment with ToonCity and Kid's Discovery Farm moving up into the Italian Gardens.
- Phased fencing setup to begin on July 15.
- Marketing campaign for Fair will be launched at the end of July.

# PNE MINUTES



- **Debie:** Will Canoe Cultures be here?
  - **Karen:** Yes, they'll be in their usual spot in Italian Gardens.
- **Courtney:** Will the pyro show be taking place in Centre Grounds?
  - **Karen:** Yes – it's all signed off by VFD as safe.
- **Courtney:** Are Duelling Pianos going to be here?
  - **Karen:** Yes.
- **Debie:** Will there be more market vendors than previous years?
  - **Karen:** We had previously spread our vendors out more across the park, and added in other activations to the Forum as we get less vendors each year. They are now all going to be in the Forum again.
- **Ruby:** Have you considered having a more artsy focus/smaller shops?
  - **Karen:** Yes – we have tried it before, however most smaller vendors don't have enough stock for 17 days. We did try some rotation of smaller vendors last year. We do have a new partnership with Interac, who work with microvendors, so this is something we can look at again in the future.
- **Ruby:** Will there be a bike valet this year?
  - **Karen to check.**

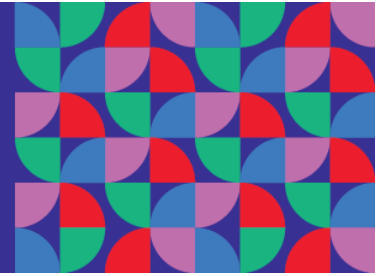
### 3. Amphitheatre & ThunderVolt Update

- Key dates for major construction, site improvements, traffic control on Miller Drive and the widening of the path to the East of the Sanctuary to access Playland.
- Communications to be increased again with Anna on board.
- ThunderVolt close to operating.
  - **Courtney:** Are you using the trees you cut down from the Sanctuary in the roof?
    - **Karen:** We consulted with local indigenous groups and donated the best trees to them for carving. The remaining trees were either placed around the Sanctuary pond or mulched and reused on site.
  - **Debie:** How fast is the launch coaster?
    - **Anna:** 1.3Gs of acceleration.

### 4. Site Maintenance Update

- Overview of the clearing of invasive species in the Sanctuary, re-turfing the Italian Gardens, pressure washing, tree management plan and heron conservation.
  - **Courtney:** Do you have any issues with tents?
    - **Karen:** No, we have 24hr security, it doesn't mean people haven't tried, but they're moved on swiftly.
  - **Courtney:** Will the FIFA event be ticketed?

# PNE MINUTES



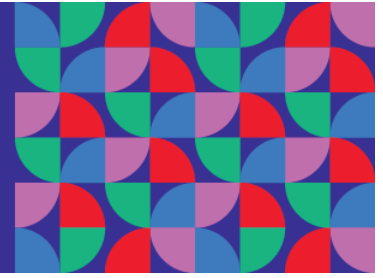
- **Karen:** The FIFA Fan Fest will be free when there are matches in Vancouver. However, we don't know what their operating plan is, as to whether they will open it on all match days so people can watch the games.

## 5. PNE Advisory Groups & Councils

- Overview of the new CAG membership requirements, alignment with new Neighbourhood Focus Groups and Youth Council, and how that will roll out in the future.
- Open houses to be reduced to 2x a year and potential of having a tabletop format where people can come and speak directly to the people/department that they want to, as the same topics are brought up each time by the same neighbours.
  - **Debie:** I think the NFG/CAG crossover is great. Will there be alignment with ?????
    - **Karen:** We've not broached that area; we will have conversations.
  - **Ruby:** Should DEI be separated in to two so you can have an indigenous member?
    - **Karen:** We're currently having conversations with the local indigenous groups about how they want their input on the PNE to look, whether that's a seat on the board or their own group or on CAG. If they applied, we wouldn't say no.
  - **Linda:** I think you need two youth representatives, to get the public/private aspects. You probably need more than one representative for each category – so that for cultural/sports you can have a bigger organisations and smaller, local ones. Same for DEI, you probably need someone from each category to get coverage of all ideas. Hastings Community Centre would love to be a part of this.
    - **Karen:** Youth council will be a group of diverse ages/backgrounds from various schools, and they will have a rep on CAG.
  - **Tricia:** I think there are arguments for everything, but the main thing is that you keep it manageable.
    - **Karen:** We're finetuning CAG with feedback from neighbours and the community as they've said they don't have an opportunity to communicate with the PNE.
  - **Tricia:** You don't want to lose the neighbourhood input into CAG.
    - **Karen:** The neighbours should be able to see themselves represented in that list both on CAG and the NFG.
  - **Ruby:** It would be good to have some of the older neighbours that sell parking on the NFG, as well as parents with kids.
  - **Dino:** Combining neighbour and youth with one person could be advantageous.
  - **Courtney:** I don't think you have a problem communicating, it's just that a lot of people either aren't looking, or aren't finding it.
    - **Karen:** I'm learning that those that have been in the community 40/50 years are use to the longstanding tradition of 'this is how things have always been done'



# PNE MINUTES



and we've changed our processes three times in three years and it can be confusing.

- **Tricia:** The BIA would love to help, particularly with the business tickets. If it's specific and has a link, we can put it in our newsletter.

**Meeting end:** 7:00PM